



**Yacht Battery Co., Ltd.**

4F-5, No. 925, Sec. 4, Taiwan Blvd., Taichung, 40767 Taiwan, R.O.C.  
T : 886-4-2358-0578 E : sales@yacht-battery.com

**Yacht Battery USA, Inc.**

395 Tidwell Drive, Alpharetta, GA 30004, U.S.A.  
T : 1-678-393-0888 E : yacht.usa@yacht-battery.com

## How to read the date code on a Yacht battery

The date code number is used to identify when the battery was manufactured. It is applied at the factory and used for production control and tracing purposes.

Yacht uses a six-digit date code, which is located on top of the battery.

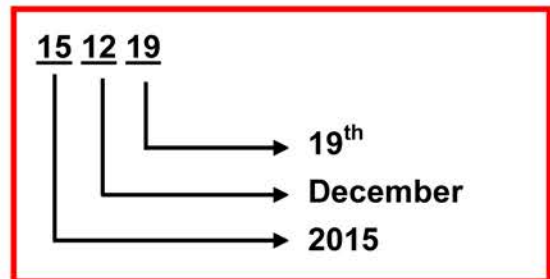
The date code used for Factory-Activated AGM batteries is different than the date code used for Dry AGM and Conventional batteries.

## Date Code: Factory-Activated AGM

- First two digits: Year battery produced.
- Second two digits: Month battery produced.
- Third two digits: Date battery produced.

**Example:**

**FA AGM BATTERY DATE CODE**



**Note:**

To help facilitate proper battery care and maintenance, the date code on Factory-Activated batteries is easy to decipher and understand. We recommend checking the voltage every 3 months and charge when needed.



**Yacht Battery Co., Ltd.**

4F-5, No. 925, Sec. 4, Taiwan Blvd., Taichung, 40767 Taiwan, R.O.C.  
 T : 886-4-2358-0578 E : sales@yacht-battery.com

**Yacht Battery USA, Inc.**

395 Tidwell Drive, Alpharetta, GA 30004, U.S.A.  
 T : 1-678-393-0888 E : yacht.usa@yacht-battery.com

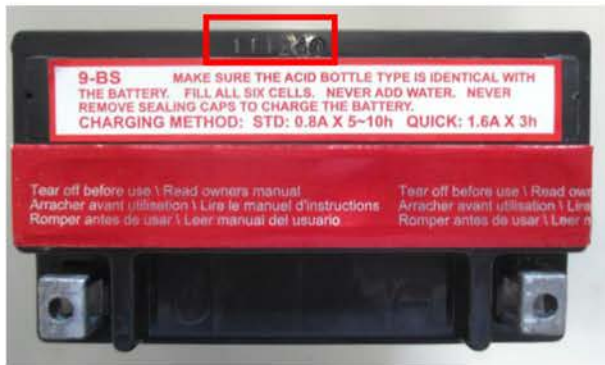
**Date Code: Dry AGM & Conventional Batteries**

- First two digits: No meaning. All codes begin with "11".
- Second two digits: Month battery produced.
- Third two digits: Year battery produced (in code).

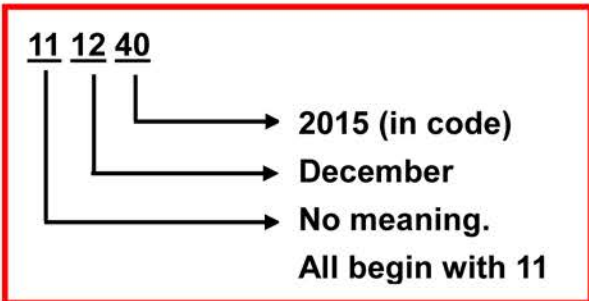
**Example:**

**DRY AGM BATTERY DATE CODE**

**CONVENTIONAL BATTERY DATE CODE**



**Year (in code)**



Year	Code	Year	Code	Year	Code	Year	Code	Year	Code
2001	09	2006	59	2011	00	2016	50	2021	01
2002	19	2007	69	2012	10	2017	60	2022	11
2003	29	2008	79	2013	20	2018	70		
2004	39	2009	89	2014	30	2019	80		
2005	49	2010	99	2015	40	2020	90		